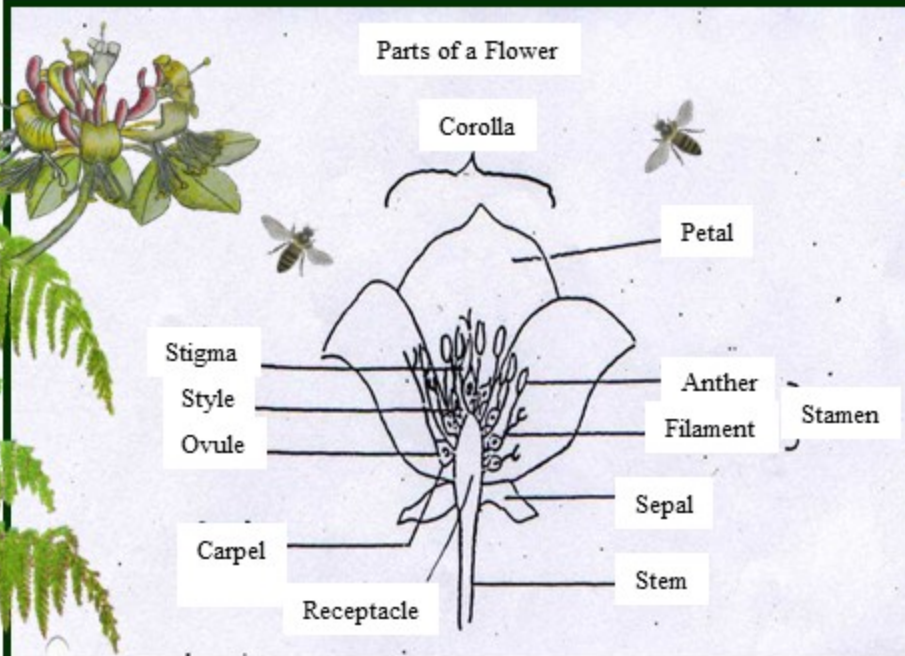


FLOWER PARTS



The female part of the flower has one or more carpels which contain the ovules. On top of the carpel there is the style and stigma. Pollen is produced in the male part, which are the anthers at the top of the stamen. The ring of petals and the ring of sepals protect the stamens and stigma.





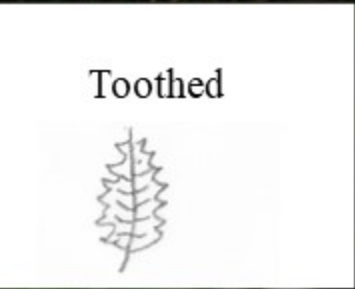
Floret



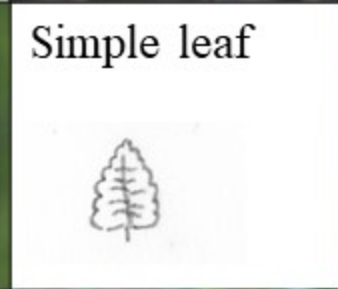
Catkin



Epicalyx



Toothed



Simple leaf



Whorl



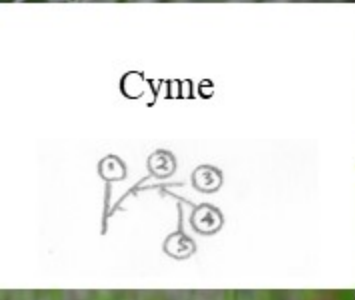
Panicle



Spiklet



Perfoliate



Cyme



Leaflet



Clasping leaf



Tendril



Triangular



Spear-shaped





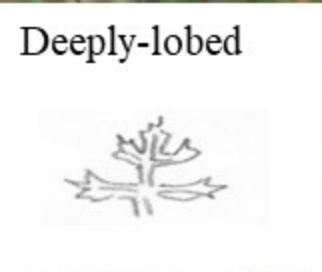
Involucre



Round-stemmed



Pinnatifid



Deeply-lobed



Heart-shaped leaf



Obovate leaf



Compound



Halberd



Alternate-leaved



Trifoliate-leaf



Oblong-leaf



Chordate



Reflexed sepal



Bract



Translucent holes

